

INDUSTRIAL LIGHT

NICOLE SERIES

KEY FEATURES

BODY

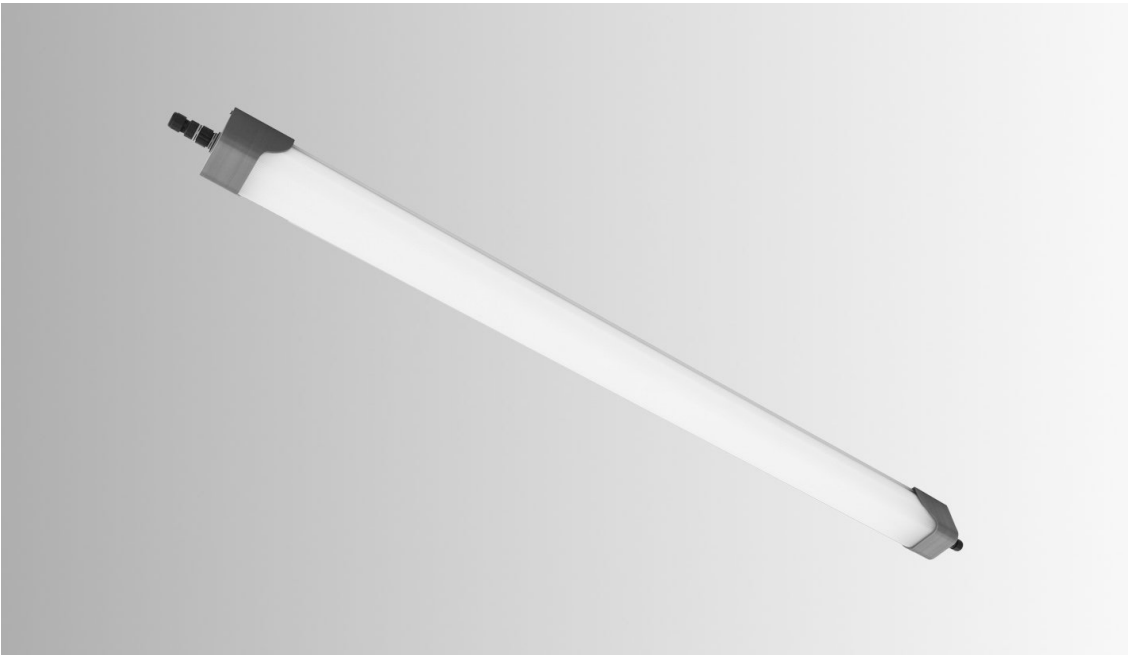
Polycarbonate or PMMA  
body White painted steel  
base Polycarbonate or PS  
endcaps

OPTIC

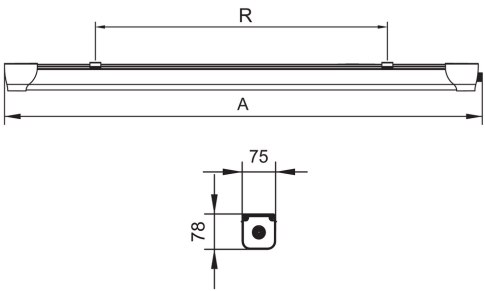
PC -Semiopal Polycarbonate  
PM - Semiopal PMMA optic

LED

Mid power LED



DIMENSIONS



MODEL NUMBER	A (mm)	B (mm)	C (mm)
OL-NICOLE-M1	710	75	78
OL-NICOLE-M2	1,310		
OL-NICOLE-M3	1,610		

IP65

220-  
240V

50-  
60HZ

CRI  
80

EEC  
A+

LIFETIME  
80,000  
HRS



CE

RoHS



DIM 1-10V DC

Standard Warranty: 2 Years  
Extended Warranty: 3 Years

TECHNICAL SPECIFICATION

MODEL NUMBER	W	lm	lm/W	K
OL-NICOLE-M1-01	20	2,600lm	130	3,000K 4,000K 5,700K
OL-NICOLE-M2-01	37	5,400lm	146	
OL-NICOLE-M3-01	53	7,800lm	147	

Fabiia, G08, The Light Box, 111 Power Road, Chiswick, London W4 5PY, United Kingdom.  
contact@norse.lighting | www.norse.lighting

Please note: Specification values may change due to rapid development of lighting technology. Data may be rounded up/down for illustrative purposes.  
Tolerance range of optical and electrical data is +/-10%. We reserve the right to amend or change details without prior notification.

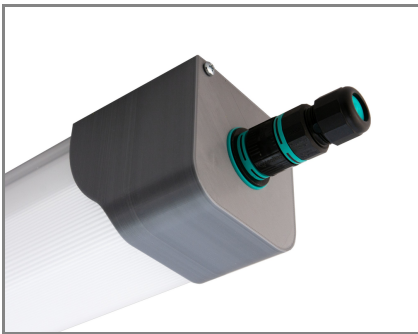
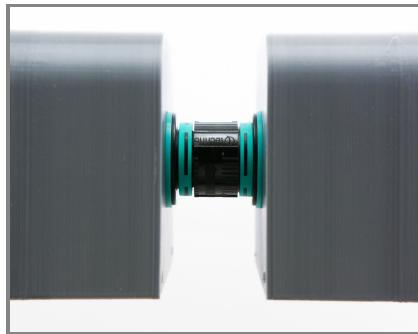
## INDUSTRIAL LIGHT

## NICOLE SERIES

## POSSIBLE VERSIONS

- NICOLE /S for solo installation, includes input connector with counterpart .
- NICOLE /P1 for continuous installation (the luminaires are interconnected by a cable), includes input connector with counterpart + output connector with counterpart .
- NICOLE /R1 for continuous connection (the fixtures are connected one after the other) , includes input connector + output connector.

## ADDITIONAL PHOTOS

INPUT CONNECTORCONNECTIONFIXING CLIP