

PENDANT LIGHT

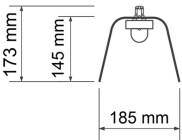
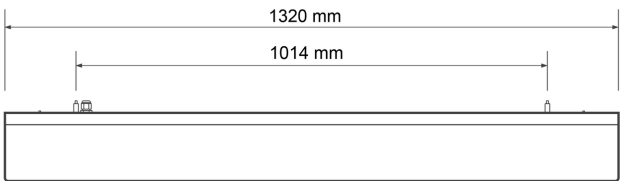
BARTEK SERIES



KEY FEATURES

- Decorative hand finished LED pendant
- Integrated Tridonic LLE LED module to aid Part L compliance
- High transmission frosted PMMA diffuser for homogeneous illumination
- Available in three desirable colourways as standard
- Bespoke paint finishes available
- Adjustable 2 m suspension cables
- Interior finish in white satin

DIMENSIONS



IP20

220-240V

50-60HZ

87% DLOR

PF >0.9

CRI 80

3yrs warranty

LIFETIME 50,000 HRS

CE

RoHS

TECHNICAL SPECIFICATION

MODEL NUMBER	W	lm	K
OL-BARTEK-01	13	1,550lm	3000K
OL-BARTEK-02	13	1,625lm	4000K

Fabiia, G08, The Light Box, 111 Power Road, Chiswick, London W4 5PY, United Kingdom.
contact@norse.lighting | www.norse.lighting

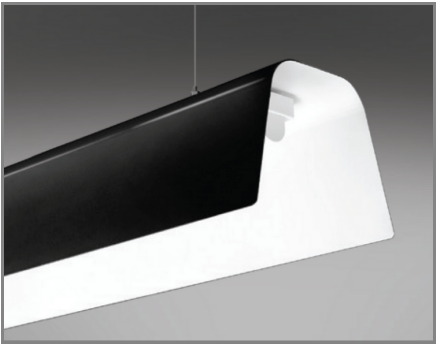
Please note: Specification values may change due to rapid development of lighting technology. Data may be rounded up/down for illustrative purposes. Tolerance range of optical and electrical data is +/-10%. We reserve the right to amend or change details without prior notification.

PENDANT LIGHT

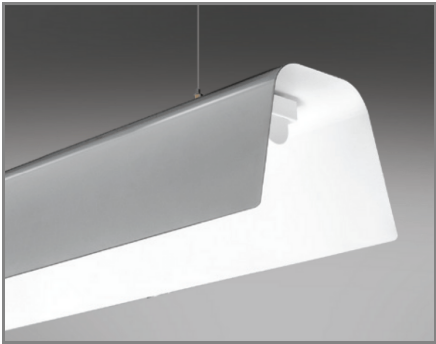
BARTEK SERIES

OPTIONS

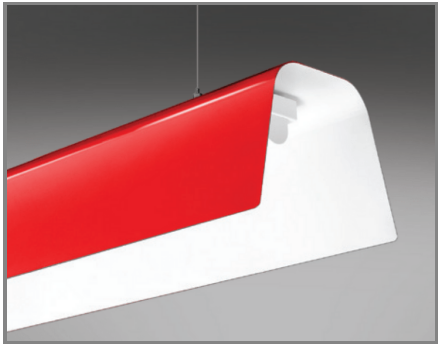
B / Black
satin outer, white satin inner



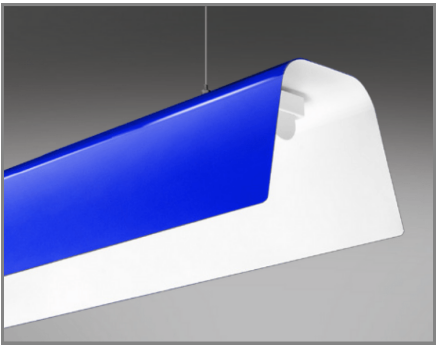
G / Grey
satin outer, white satin inner



R / Red
gloss outer, white satin inner



Product variations



Other colours and specifications
available on request