

ELMER SERIES LED PANEL

KEY FEATURES

BODY

White painted (RAL 9003) metal sheet

OPTIC

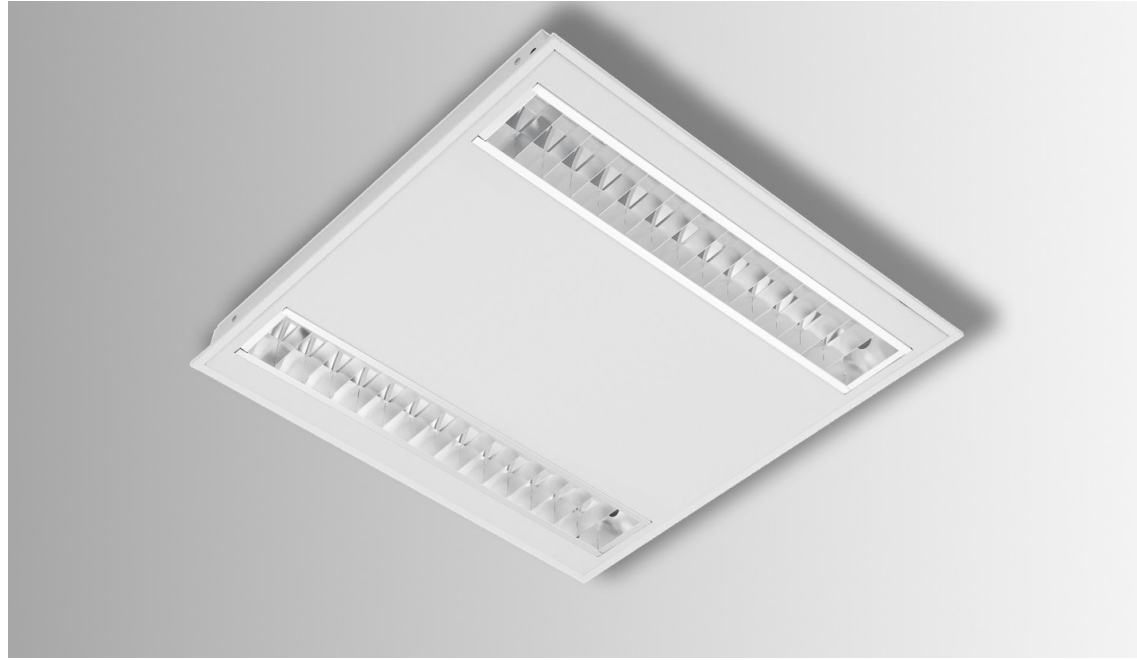
KV - double parabolic louvre category C2 or highly polished aluminium, with opal cover of LED modules

KVM - double parabolic louvre category C2 of mat aluminium, with opal cover of LED modules

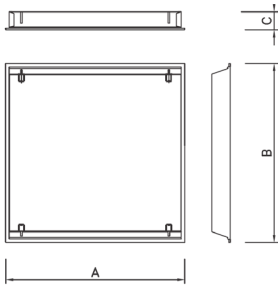
LED

Mid power LED

CRI 80 (CRI 90 on request)



DIMENSIONS



MODEL	A(mm)	B(mm)	C(mm)
OL-ELMER-M1(L2)	600	600	52
OL-ELMER-M2(L2)	625	625	
OL-ELMER-M3(L4)	600	600	
OL-ELMER-M4(L4)	625	625	
OL-ELMER-M5(L2)	1,200	300	
OL-ELMER-M6(L2)	1,250	310	



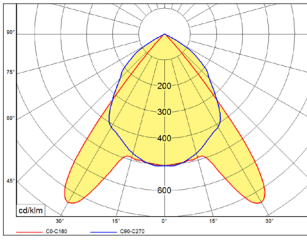
TECHNICAL SPECIFICATION

MODEL NUMBER	W	lm	lm/W	K
OL-ELMER-M1(L2) -01	33	3,400 lm	103	3,000K 4,000K
OL-ELMER-M2(L2)-01	28	3,100 lm	111	
OL-ELMER-M3(L4)-01	39	3,800 lm	97	
OL-ELMER-M4(L4)-01	28	3,100 lm	111	
OL-ELMER-M5(L2)-01	39	3,800 lm	97	
OL-ELMER-M6(L2)-01	28	3,100 lm	111	

Fabiia, G08, The Light Box, 111 Power Road, Chiswick, London W4 5PY, United Kingdom.
contact@norse.lighting | www.norse.lighting

ELMER SERIES LED PANEL

PHOTOMETRIC DRAWINGS



Fabiia, G08, The Light Box, 111 Power Road, Chiswick, London W4 5PY, United Kingdom.
contact@norse.lighting | www.norse.lighting