

BARTEK SERIES PENDANT LIGHT

KEY FEATURES

Decorative aluminium hand spun LED pendant

Replaceable E27 Philips Deco fixed output LED lamp or warm dimming Master LED lamp

Available in three desirable colourways as standard

Supplied with colour coordinated ceiling cup
Bespoke paint finishes available

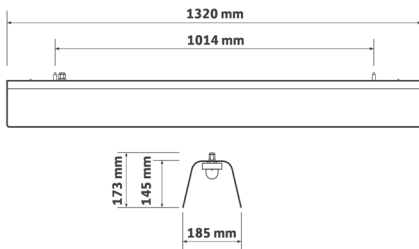
Red braided cable option

Adjustable 2m suspension cable

Interior finish in white satin



DIMENSIONS



IP20
220-240v
50-60 HZ
87% DLOR
PF >0.9
CRI 80
3yrs warranty
LIFETIME 50,000 HRS

CE
RoHS

TECHNICAL SPECIFICATION

MODEL NUMBER	W	lm	K
OL-BARTEK-01	13	1,550lm	3000K
OL-BARTEK-02	13	1,550lm	4000K

Fabiia, G08, The Light Box, 111 Power Road, Chiswick, London W4 5PY, United Kingdom.
contact@norse.lighting | www.norse.lighting

BARTEK SERIES PENDANT LIGHT

OPTIONS



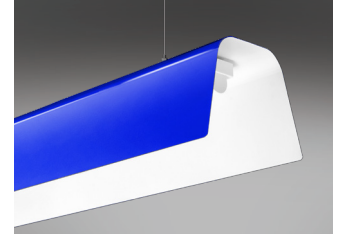
/B
Black satin outer, white satin inner



/G
Grey satin outer, white satin inner



/R
Red gloss outer, white satin inner



Product variations
Other colours and specifications
available on request